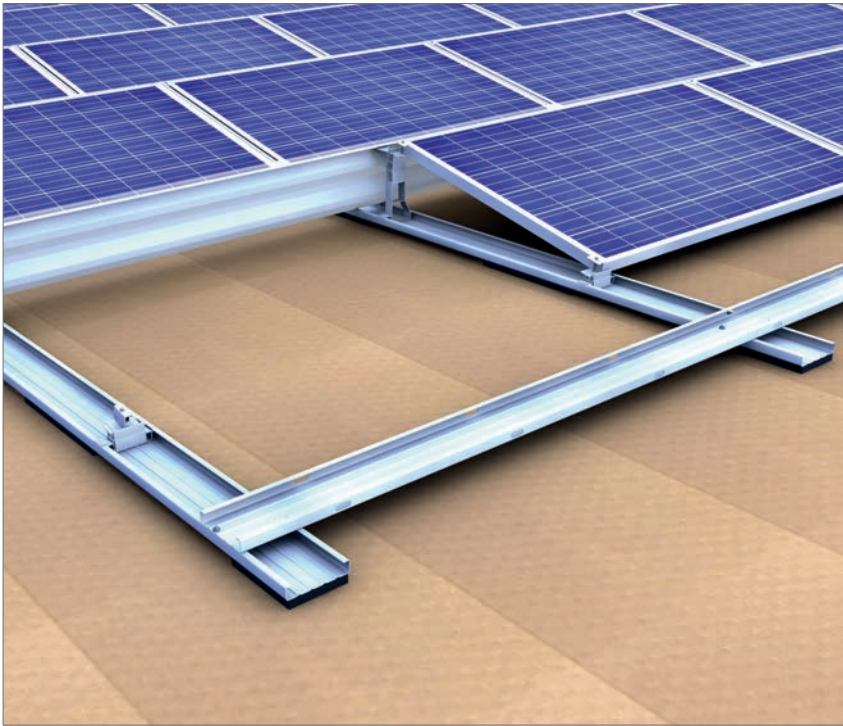


# Flat roof | south system II



Flat roof system closed II

## Your benefits

- Secure, stable and quick to install
- Wind-tunnel tested aerodynamics
- No penetration of the roof membrane
- Minimal ballasting
- Load redistribution across the wind deflector and base troughs
- Optimal angle of inclination of 13°
- Roof edge clearance of only 0.5 m
- Wide base trough with rounded edges
- Ballast trough for large-format stones
- Only three clamps for all frame heights
- Simple, Eurocode-compliant layout with our Solar-Planit online tool



Type Approved  
Regular  
Production  
Surveillance  
[www.tuv.com](http://www.tuv.com)  
ID 1111212187

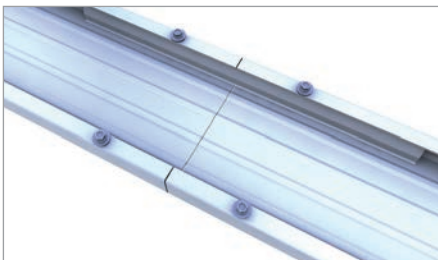


## Our solution for the south-facing direction

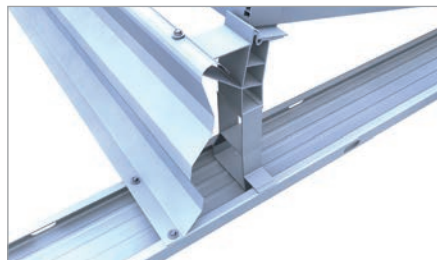
Our „Flat Roof Closed II“ system – the perfect solution for the south-facing elevation of your modules on flat roofs with a pitch of up to 5°! We had our system tested by Wacker engineers in a boundary layer wind tunnel with high wind peaks. The result confirms our quality which has proven itself for years: with our flat-roof system, you are choosing unparalleled security and stability.

The closed II system convinces with its quick and easy installation, consists of only a handful of components and click-in system parts – the roof is not punctured during installation. The optimised aerodynamics required little to no ballasting with stones – perfect for your flat roof. This is made possible by our wind deflector which is installed in an

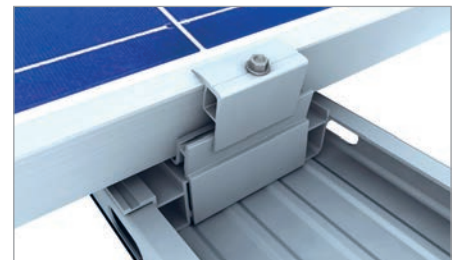
overlapping fashion on the closed II elevation and fixed to the supports and rails. This increases the overall stability and ensures optimised load transfer through its attachment to the base rails. The wide base rail has rounded edges and is pre-assembled with a continuous separation layer or individual pads for cross drainage, as desired. With a suitable cover and cable holder, it can also act as the cable channel for the cables on the base rails. Per default, this mounting system can support loads of up to 2.4 kN/m<sup>2</sup>; and can be expanded to loads of up to 4.8 kN/m<sup>2</sup> if necessary.



Base trough extension



Wind deflector and module support



Module clamp on the long frame side base foot

## Basic components



### Base trough



Item no. 03-000879

### Connector set base trough



Item no. 03-000370

### Aluminium edge protector self-adhesive



Item no. 03-000407

### Flat roof mounting screw



Item no. 03-000383

### Base foot



Item no. 03-000343

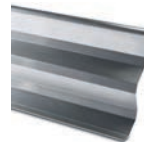
## South variant

### Module support



Item no. 03-001243

### Ballast redistribution



Item no. 03-000331

### Module bracket



Item no. 03-000324



Item no. 03-000326



Item no. 03-000310



Have you already seen it?

To our novotegra YouTube channel.  
There you will find helpful videos for installation assistance.

BayWa r.e. Solar Energy Systems GmbH | Eisenbahnstrasse 150 | 72072 Tuebingen, Germany  
Phone +49 7071 98987-0, Fax +49 7071 98987-10, [solarenergysystems@baywa-re.com](mailto:solarenergysystems@baywa-re.com)  
[www.baywa-re.com](http://www.baywa-re.com), [solar-distribution.baywa-re.de](http://solar-distribution.baywa-re.de), [novotegra.baywa-re.com](http://novotegra.baywa-re.com)